

TL-Net Protocol – Key Features

The main component of the BridgeCom network is the TL-Net protocol. TL-Net has been developed by BridgeCom Systems specifically for Multi-Site networking of LTR, CTCSS, NXDN, Mototrbo® and many other formats.

Highlights of the TL-Net Protocol:

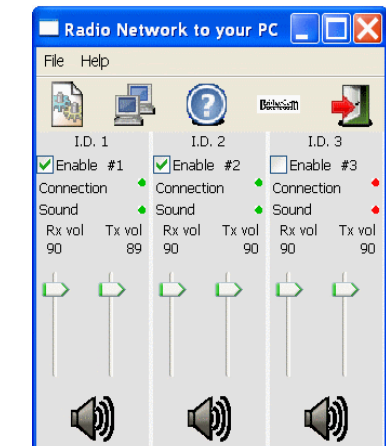
- Transmission trunking between sites. Remote sites are brought up as fast as handshaking with your local site.
- Conventional, LTR, Digital and almost any other format radio can be connected to the gateway to provide a network of mixed modes. For example, a conventional group using CTCSS can talk to an LTR talk group and a Mototrbo® digital talk group all at the same time accessing many sites on the network.
- Excellent audio quality. No loss of syllables on front-end or back-end of transmissions.
- Site specific calling. Give customers access to the sites they need.
- Push to register. Use sites only when needed.
- Uses existing standard LTR capable radios. No radio upgrades required.
- Networking equipment is easy to install and requires only one static or dynamic IP address per site.
- Both Server and Gateway can be configured to use dynamic DNS service.
- The Server and Gateway can be located behind a firewall.
- Network up to 20 repeater channels per site on just one IP address.
- Pass MDC 1200 and Fleetsync data between sites.
- Manage your entire system from any computer connected to the internet.
- Server-to-Server technology. Airtime service providers can connect their TL-Net systems together to create unlimited coverage areas.
- Windows based PC client support. Use a PC as a dispatch console or remote base station. Requires a Microphone, Speaker and a network connection.
- Standard 10/100 Base-T switches and routers. Use the customers existing network equipment, no special networking equipment required.
- Very easy system management. The Sys-op can use a web page based interface to manage the system.
- Virtual Private Networking can be used to create VPN tunnels between sites. The VPN tunnels provide a secure, encrypted connection between sites. This is optional and is not required.
- The Ethernet IP network can be a Local area network or the Internet.
- Very little bandwidth is required. A variety of different Codecs can be used varying in bandwidth from 5.9k to 64k bits/second resulting in end-to-end throughput of 16k to 80k bits/second per channel.
- Manage entire network from any computer with a web browser.
- Airtime usage data is in a ODBC compliant database. You can link your users airtime usage to Microsoft Excel, Access and many other report generator programs. Airtime usage is also available from our web page interface.
- Both server and gateway are housed in a 2U rack mountable chassis
- Lowest cost per wide-area channel in the industry

TL-NET PC - Dispatch

TL-NET PC Client Dispatch easily turns any Windows® based PC into a 20-channel dispatch console. Your PC can now communicate to your entire TL-Net System allowing you to make calls to LTR, Conventional, and Digital Radio users, as well as other PC-based users. In addition, you can monitor up to 20 channels or talk groups!



Main Screen with 20 active channels



Main Screen with 3 active channels



Setup Screen

KEY FEATURES:

- Connect to your TL-Net System anywhere in the world using the Internet or LAN.
- **Monitor up to 20 channels or talk groups.**
- Individual Mute, Mic and Speaker level controls for each channel.
- **Courtesy tone style and level can be adjusted for each channel**
- Microphone assignment and speaker assignment are configurable for each channel. Microphone and speaker can be common to all channels, separate or grouped for each channel. Completely configurable for any combination.
- **PTT displays RED when Microphone is active, displays GREEN when receiving audio.**
- Main window configurable to display only the channels you are using.
- **USB audio devices are supported as well as built in audio devices.**
- Individually name each channel for easy recognition.
- **No copy protection on the software. You can install the software on many PCs.**
- Very easy to setup. We do not use multicast or complicated mac addressing schemes.
- **No firewall ports or adjustments are required.**
- Very little Bandwidth required, adjustable from 6k bits (only when PTT is pressed)
- **Only one IP network address required.**